

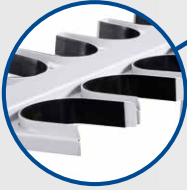
Sleeve, Adapters and Anilox Hand Pull Trolleys

Tailored Made and CE certified according to safety standards



Y Trolley

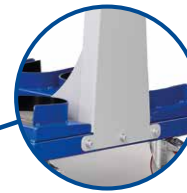
Helpful inserts that assist you in positioning sleeves, adapters and anilox on the trolley



Polyurethane foam layer on the base



Sticker plate to be applied



Painted and solid electro-welded steel structure

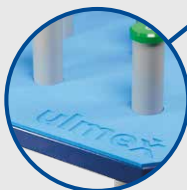
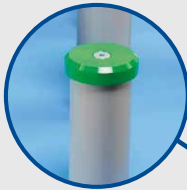


ATEX Standard antistatic wheels

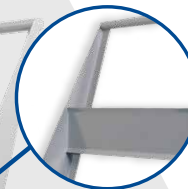


Jolly Trolley

Vertical shaft inserts that assist you in positioning sleeves, carriers and anilox on the trolley



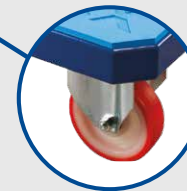
Polyurethane foam layer on the base



Painted and solid electro-welded steel structure



Sticker plate to be applied



ATEX Standard antistatic wheels

rev.00_05.2024-EN/2024



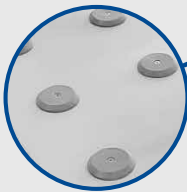
Gateway Trolley

Multi Diameter Cones

Locking System to fix sleeves or aniloxes of different heights

Lightweight and robust aluminum and steel frame

Polyurethane foam-covered base



Sticker plate to be applied



ATEX Standard antistatic wheels

Technical Specifications



ARTICLE DESCRIPTION	PLATFORM SIZE	NO. OF ROLLERS
Y Trolley	1000 x 660 mm	8
Y Trolley	1175 x 660 mm	10
Y Trolley	1575 x 660 mm	12

RAL: customizable upon customer request • Stickers, Pictograms, CE Plate

ARTICLE DESCRIPTION	PLATFORM SIZE	POLYZENE CAP THICKNESS
Jolly Trolley	700 x 640 mm	20mm
Jolly Trolley	1125 x 700 mm	20mm

Note: The number of sleeves and/or aniloxes is defined by Ulmex based on the external sleeve diameter • RAL: customizable upon customer request • Stickers, Pictograms, CE Plate

ARTICLE DESCRIPTION	PLATFORM SIZE	NO. OF ROLLERS
Gateway Trolley	1290 x 600 mm	8
Gateway Trolley	1490 x 600 mm	10
Gateway Trolley	1690 x 600 mm	12

RAL: customizable upon customer request • Stickers, Pictograms, CE Plate